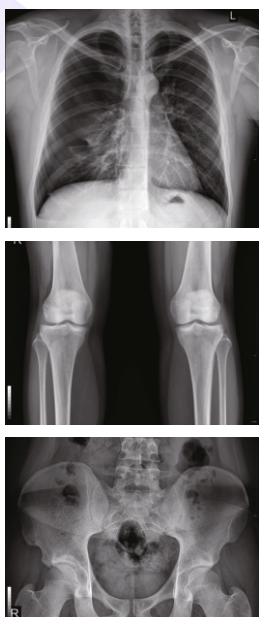


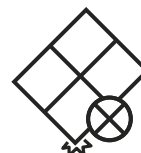


Flat Panel Detector



NON-Glass

HIGH TECHNOLOGIES FOR
HIGH PERFORMANCE



DURABLE AND ERGONOMIC
DESIGN FOR MOBILITY



USER FRIENDLY AND
CONVENIENT FEATURES

DR Digital
X-ray
Detector
PLUG & PLAY

Easy and Economic Upgrade to Digitize any X-ray equipment

- Portable, compact with removable carry handle
- 14" x 17" active area with 14 hrs battery backup
- Single DR system works with table, wall bucky and also portable with any X-ray system
- Wire / Wireless image transfer
- Fast acquisition within 3 seconds and continuous automatic acquisition using AED Plus technology
- In-built memory allows the detector to acquire and store images without computer



Low Dose IGZO TFT

Enhanced AED®

Extended Battery Life

Durable Design

Dust and Water Proof

Flat Panel Detector - Technical Specifications

High sensitivity, high performance and high reliability flat-panel detector for imaging professionals

Application		General Radiography
Conversion Screen (Scintillator)		CsI / GOS
TFT Panel		IGZO TFT / a-Si TFT
Pixel Pitch		140 μm
Image Data (AD conversion)		Pure 16 bit
Image Resolution		2,500 x 3,052
Image Size		14x17 inch (350x427mm)
On-board Storage		< 150 Images
Wired / Wireless communication		Gigabit Ethernet / IEEE 802.11ac
Trigger Mode		High Sensitive 2xAED (Auto Exposure Detection)
Calibration Mode		ACC (Auto Calibration Control) / Manual
Durability	* Weight Bearing for whole surface	< 500 kg
	* Point Weight Bearing(4x4cm)	< 180 kg
	* Drop Test	Up to 100 cm
	Water & Dust Resistance	IP67
X-Ray Voltage Range		40~150kVp
Voltage		AC 100~240V, 50/60Hz, DC18V 3.5A
Environment		Storage: -10°C ~ 60°C, 10% ~ 90% RH (non-condensing) Operation: 10°C ~ 35°C, 20% ~ 75% RH (non-condensing)
Battery Type		Lithium-Ion Polymer Battery
Battery Full Operation Time		14 Hours
Dimensions		385 x 461 x 15 mm
Weight (Without / With battery)		2.4 kg / 3.3 kg (dual battery)

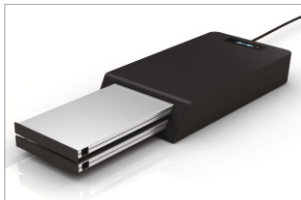
* Weight Bearing and Drop test measured based on Non-Glass TFT

Standard Accessories

Flat panel, Battery (2nos), Battery Charger, Software, WiFi router, Computer (i3, 10th Generation), B/W printer (Epson)

Optional

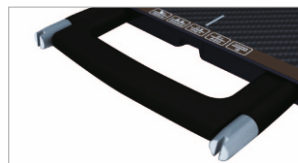
Dry X-ray laser printer



Dual Battery Charger



Dual Battery



Easy Grip & Removable Handle



Status Monitoring OLED

Since R&D is a continuous process, to make changes in product features, specifications, aesthetics and/or to discontinue the same at any time without notice or obligation

Certified ISO 9001:2015, EN ISO 13485:2016 company

